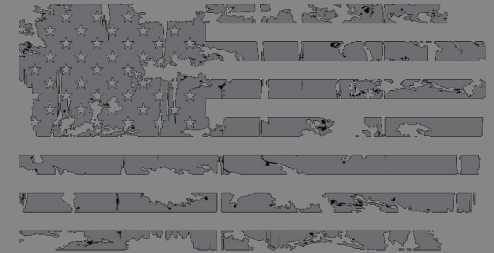


Mile 3:
 39° 45' 36.37", -75° 33' 41.43"
 On N. Scott St., heading NE
 Even with Stop sign on SE corner
 of N. Scott & Shallerross

Mile 2:
 39° 45' 21.36", -75° 32' 59.93"
 On N. Park Dr., heading NW
 At crosswalk before Van Buren St.

Mile 1:
 39° 45' 11.82", -75° 33' 0.71"
 On N. Park Dr., heading SW
 60' before gate entrance to
 Wilmington & Brandywine Cemetery

Lovering 5K



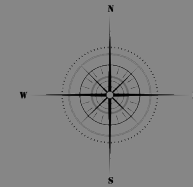
Wilmington, DE

39° 45' 37.66", -75° 33' 35.62"
 (WGS84)

Certified Course
 #DE17011NP

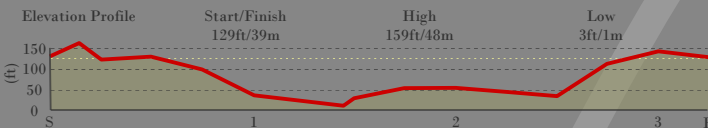
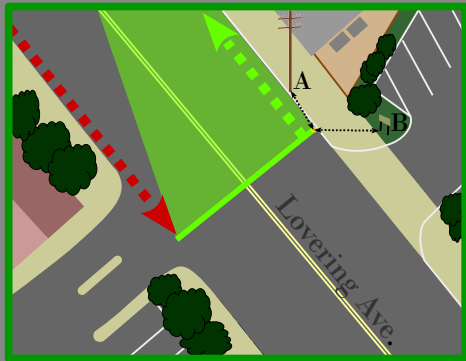


Effective Dates:
 11-4-17
 through
 12-31-27



Start:
 39° 45' 37.66", -75° 33' 35.62"
 On Lovering Ave, headed NW
 A) 18'4" SW of pole # 48299/3930
 B) 19' 3" W of green pole supporting
 "Halligan Bar Customer Parking Only"
Finish:
 Same as Start
 Approaching from the NW

Start/Finish Inset



Course Measured On:
 October 25th, 2018

Measurement
 & Map by:

Nathan Porch



Notes:

- Map is not to scale
- Mile locations are not certified
- Measurement assumes a single runner
- Course must stay within shown restrictions
- This Official Course Map may not be altered
- Measurement assumes no parked vehicles on course
- Route line represents measurement along the Shortest Possible Route

scan for
map & certificate

