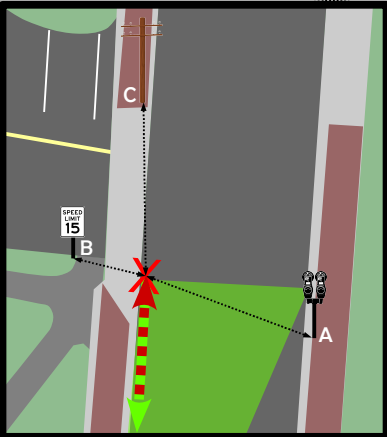


Academy st. 5K

Newark, Delaware
39° 40' 52.30", -75° 44' 58.64"
(WGS84)

Certified Course
#DE7012NP

Effective Dates:
12-15-17
through
12-31-27

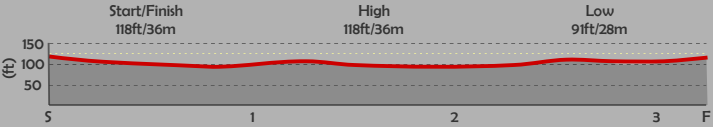
Start:
39° 40' 52.30", -75° 44' 58.64"
On Academy St. heading South
A) 367" WNW of parking meter #235/237
B) 227" ESE of "15mph" speed limit sign
C) 479" South of pole #20D47

Finish:
Same as Start, approaching from the South

Mile 1:
39° 40' 21.59", -75° 44' 43.30"
On JFH Trail heading NE
86' after light #43
At raised square concrete pad

Mile 2:
39° 40' 23.69", -75° 44' 36.70"
On JFH Trail heading SW
78' before light #48
Behind #315 S. Chapel St (DEDC)

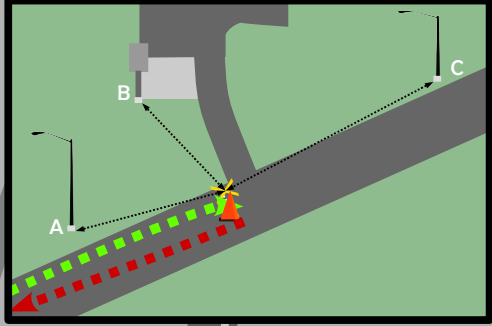
Notes:
Map is not to scale
Mile locations are not certified
Measurement assumes a single runner
This Official Course Map may not be altered
Measurement assumes no parked vehicles on course
Route line represents measurement along the Shortest Possible Route



461 Wyoming Rd

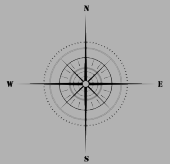
T/A

Turnaround:
39° 40' 31.67", -75° 44' 11.92"
On JFH Trail approaching from the WSW
Traveling clockwise around a point centered in the trail
The point is adjacent to a point that is:
A) 444" ENE of concrete base on light pole #67
B) 364" SE of the concrete base of the "trash compactor" concrete base
C) 75" WSW of concrete base on light pole #68



Course Measured On:
December 14th, 2017

Measurement & Map by:
Nathan Porch

S/F

3

Academy St.

E. Delaware Ave.

Lovett Ave.

Mile 3:
39° 40' 46.81", -75° 44' 59.17"
On Academy St. heading North
20' after Lovett Ave.

Courtney St.

E. Park Pl.

Kells Ave.

Manual St.

1

James F. Hall Trail

2

S. Chapel St.

Newark & Bantock Trail

