

GOVERNOR'S CUP

★ 5K ★

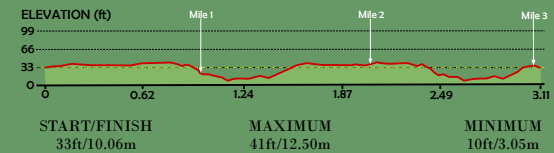
5 kilometers ≈ 3.10685mi
Dover, Delaware

39°09'42.30", -75°31'23.75"
(WGS84)

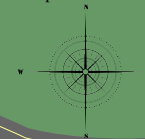
Certified Course
#DE17009NP



Effective Dates:
8-8-17 thru 12-31-27

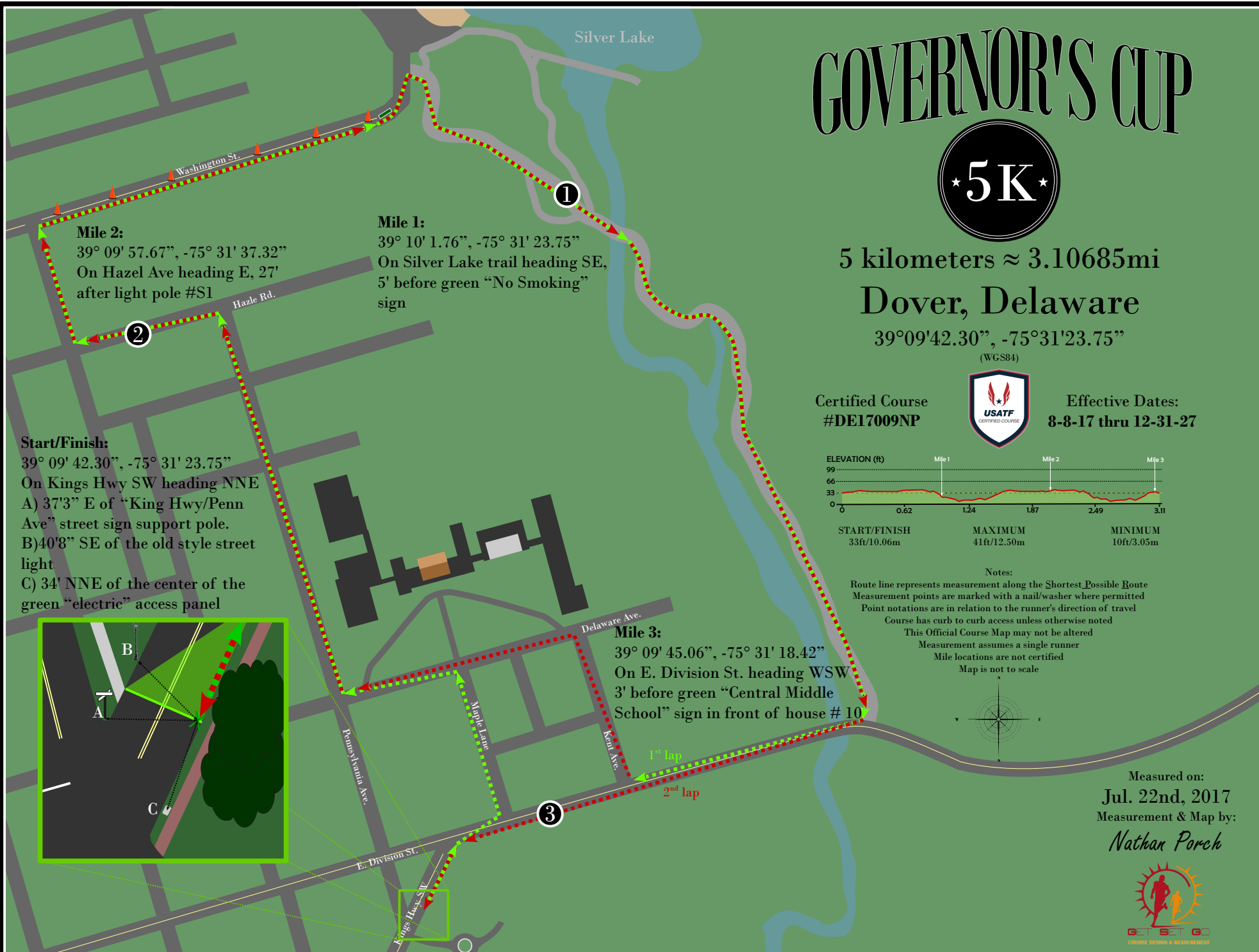


Notes:
Route line represents measurement along the Shortest Possible Route
Measurement points are marked with a nail/washer where permitted
Point notations are in relation to the runner's direction of travel
Course has curb to curb access unless otherwise noted
This Official Course Map may not be altered
Measurement assumes a single runner
Mile locations are not certified
Map is not to scale



Measured on:
Jul. 22nd, 2017
Measurement & Map by:

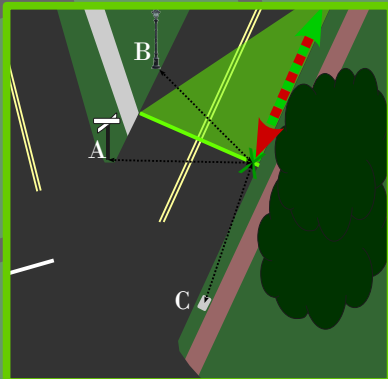
Nathan Porch



Mile 2:
39° 09' 57.67", -75° 31' 37.32"
On Hazel Ave heading E, 27'
after light pole #S1

Mile 1:
39° 10' 1.76", -75° 31' 23.75"
On Silver Lake trail heading SE,
5' before green "No Smoking"
sign

Start/Finish:
39° 09' 42.30", -75° 31' 23.75"
On Kings Hwy SW heading NNE
A) 37'3" E of "King Hwy/Penn
Ave" street sign support pole.
B) 40'8" SE of the old style street
light
C) 34' NNE of the center of the
green "electric" access panel



Mile 3:
39° 09' 45.06", -75° 31' 18.42"
On E. Division St. heading WSW
3' before green "Central Middle
School" sign in front of house # 10

1st lap
2nd lap