

Notes:
 Course has curb to curb access except where otherwise noted
 Point notations are in relation to the runner's direction of travel
 Route line represents measurement along the Shortest Possible Route
 Measurement points are marked with a nail/washer where permitted



5 kilometers = 3.10685 mile New Castle, Delaware

39°41'14.8", -75°36'37.7"
 (WGS84)

Certified Course
 #DE17005NP

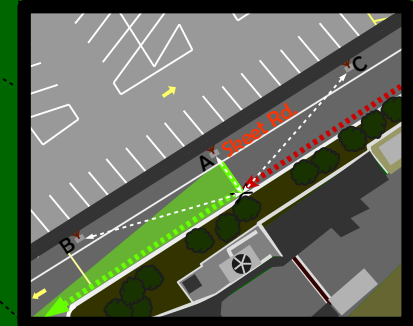


Effective Dates:
 4-10-17 thru 12-31-27

Starts:

39°41'14.8", -75°36'37.7"
 Heading SW
 On Sreet Rd between elevated parking and #12 Reads Way
 A: 23'11" SE of the centerline of the middle support beam foot
 B: 56'9" ENE of the support beam footer on the left (SW)
 C: 57'5" SW of the support beam footer on the right (NE)

Finish: Same as Start, approaching from the NE



Mile 1:

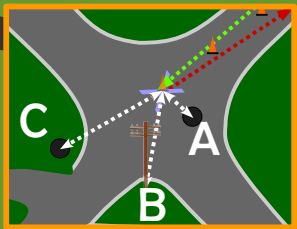
39°41'20.5", -75°36'35.9"
 On Reads Way
 Even with green electrical
 Box #3503

Mile 3:

39°41'17.1", -75°36'31.7"
 On Reads Way
 approaching turn
 onto Sreet Rd
 Heading NNW

Turnaround:

39°41'0.46", -75°36'49.26"
 On Corporate Cir. approaching
 from the NE, traveling Counter-
 clockwise around a point that is:
 A: 10'3" NW of the 26" dia.
 manhole cover
 B: 57'4" NNE of pole
 #46769/41130
 C: 62'1" ENE of the 26" dia.
 "New Castle County Sanitary
 Sewer" manhole cover



Place cone on
 top of 26"
 manhole
 cover

Measured on:
 Jan. 21st, 2017
 By:

Nathan Porch



in partnership with:



gravel
 surface
 435'

START/FINISH 49ft/14.93m
 MAXIMUM 75ft/22.86m
 MINIMUM 11ft/3.35m